

PHOTOMETRIC TEST REPORT



FIXTURE DATA

Manufacturer: Clay Paky s.r.l.
Fixture model: Ultimo Hybrid
Date: 2024-11-25

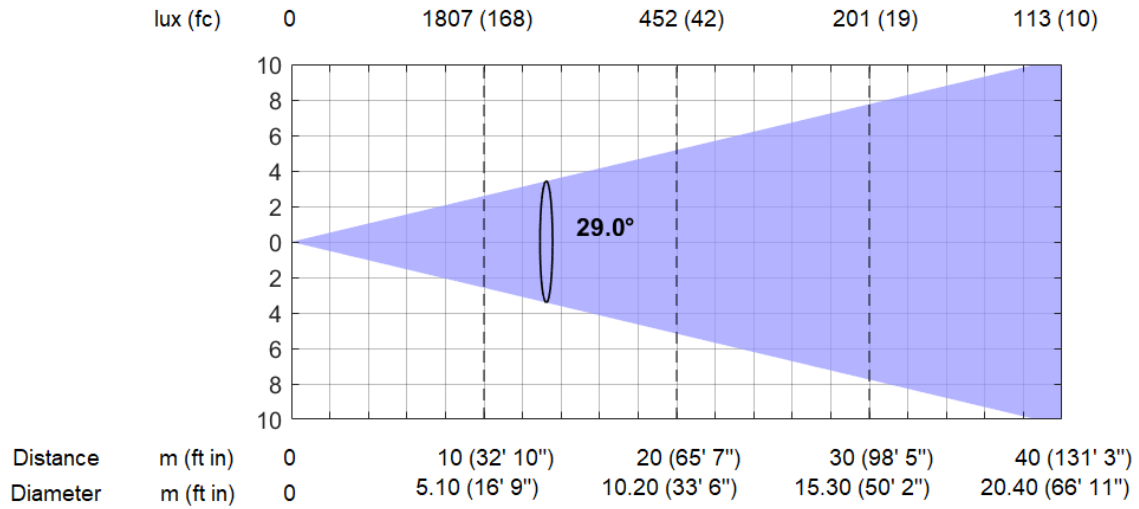
TABLE OF CONTENTS:

⇒ MAX ZOOM - BEAM MODE	3
⇒ MAX ZOOM - SPOT MODE	4
⇒ MINIMUM ZOOM - BEAM MODE	5
⇒ MINIMUM ZOOM - SPOT MODE	6
⇒ TM-30: WHITE	7
⇒ TLCI-2012: WHITE	8
⇒ TM-30: CTO	9
⇒ TLCI-2012: CTO	10

MAX ZOOM - BEAM MODE

Maximum Zoom, Beam mode (29°)

Total Output: 16100 lumens

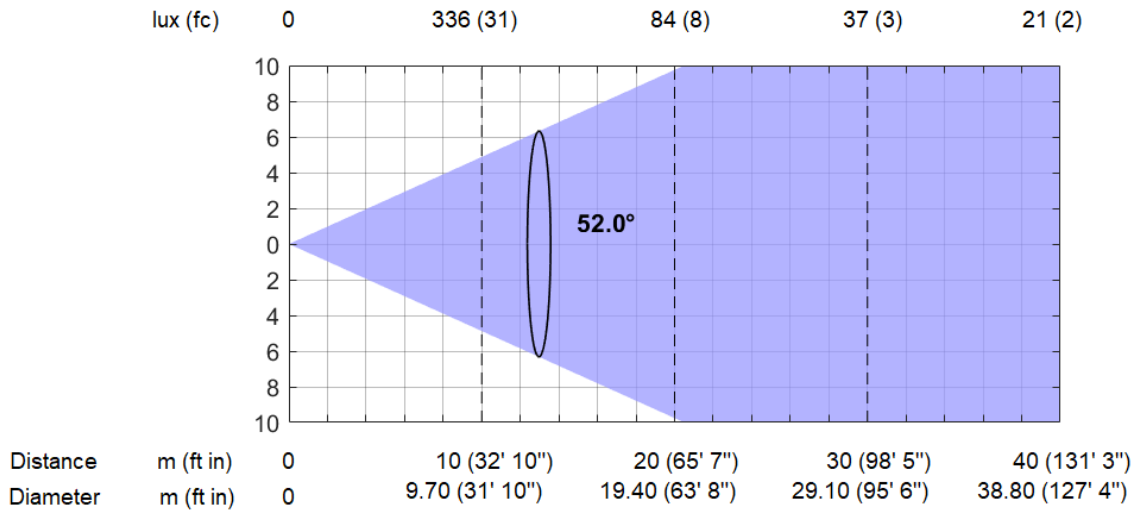


*Lumen values detected with integrating sphere. Measurements taken 15 minutes after the fixture was turned on.

MAX ZOOM - SPOT MODE

Maximum Zoom, Spot mode (52°)

Total Output: 18800 lumens

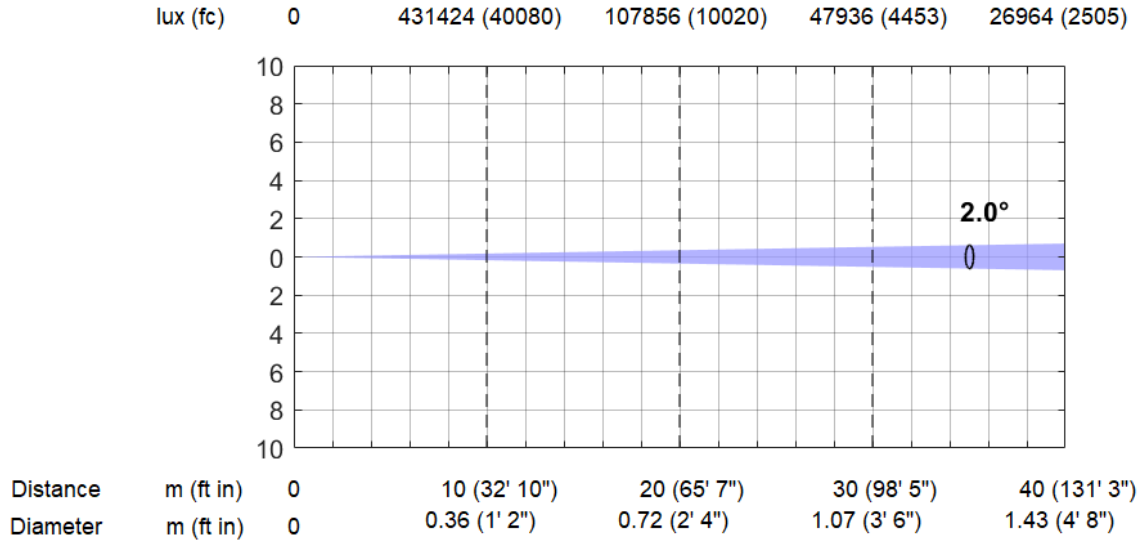


*Lumen values detected with integrating sphere. Measurements taken 15 minutes after the fixture was turned on.

MINIMUM ZOOM - BEAM MODE

Minimum Zoom, Beam mode (2°)

Total Output: 15100 lumens

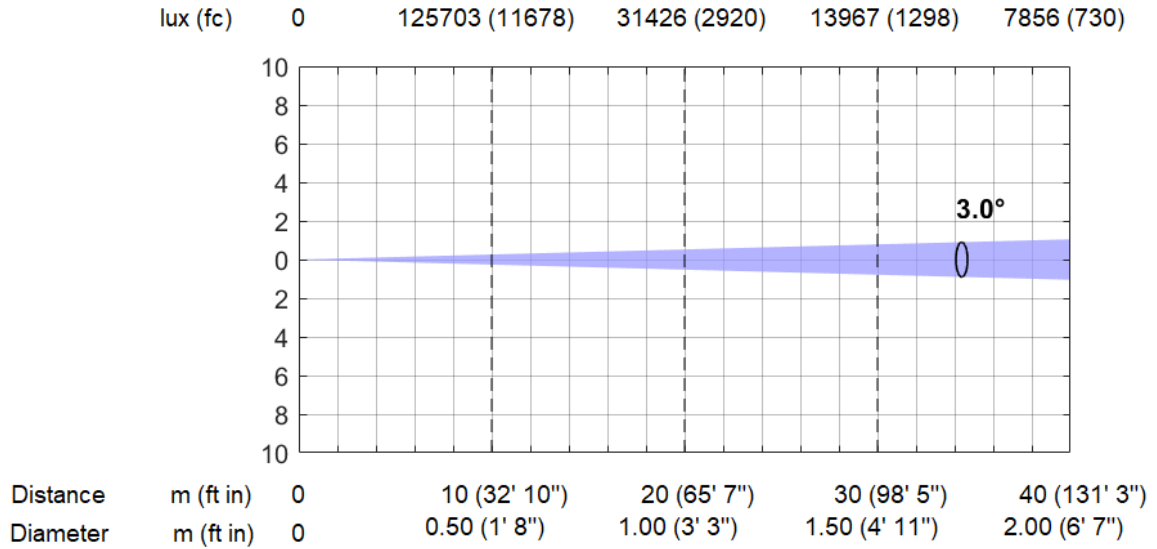


*Lumen values detected with integrating sphere. Measurements taken 15 minutes after the fixture was turned on.

MINIMUM ZOOM - SPOT MODE

Minimum Zoom, Spot mode (3°)

Total Output: 14900 lumens



*Lumen values detected with integrating sphere. Measurements taken 15 minutes after the fixture was turned on.

TM-30: WHITE

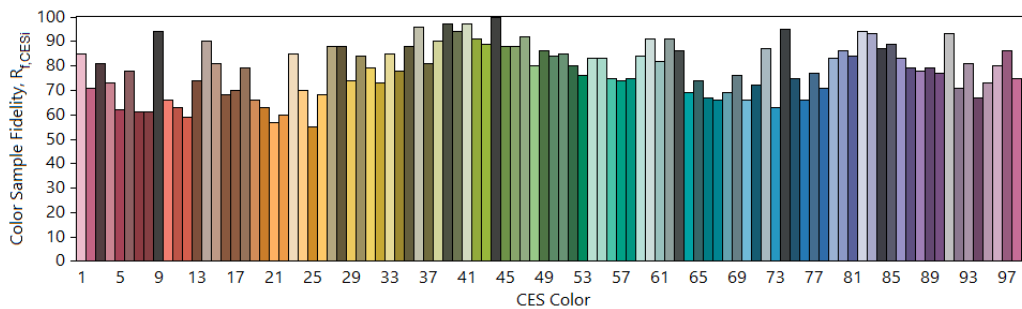
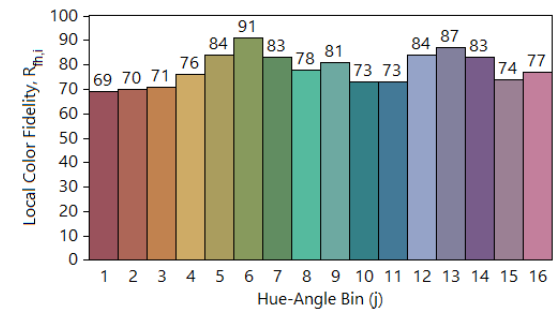
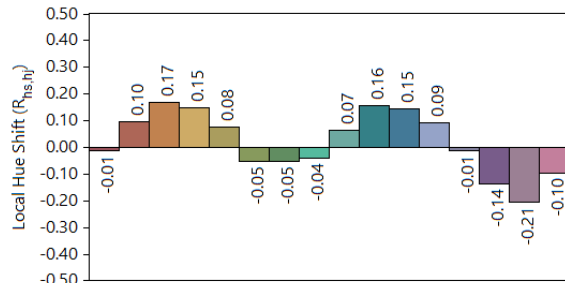
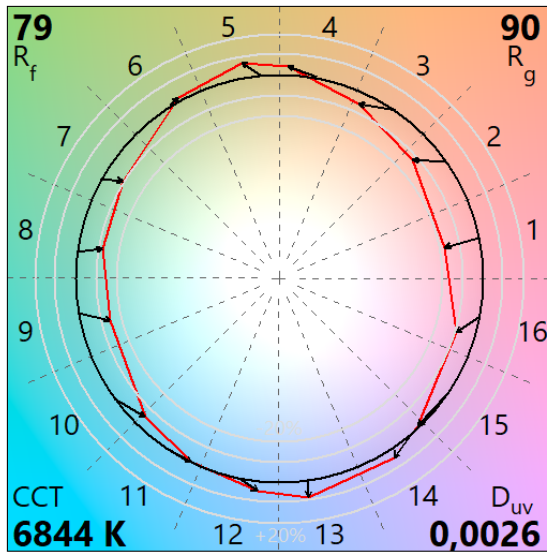
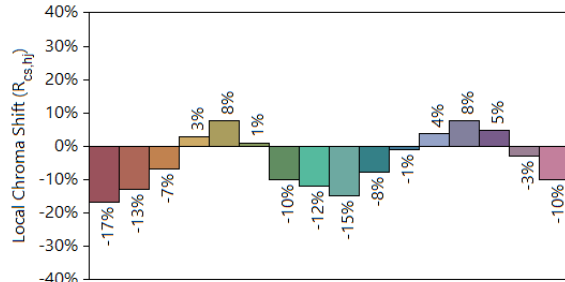
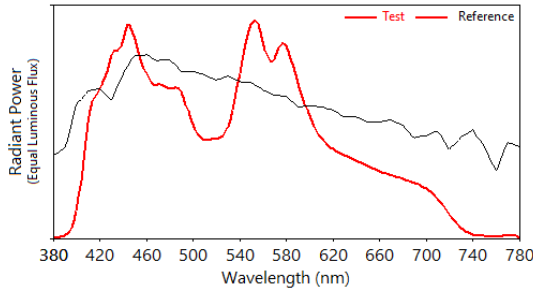
IES TM-30-18 Color Rendition Report

Source: ULTIMO HYBRID

Manufacturer: CLAY PAKY

Date: 21.11.2024

Model: ULTIMO HYBRID



Notes: WHITE

x 0,3077
y 0,3229
u' 0,1966
v' 0,4643

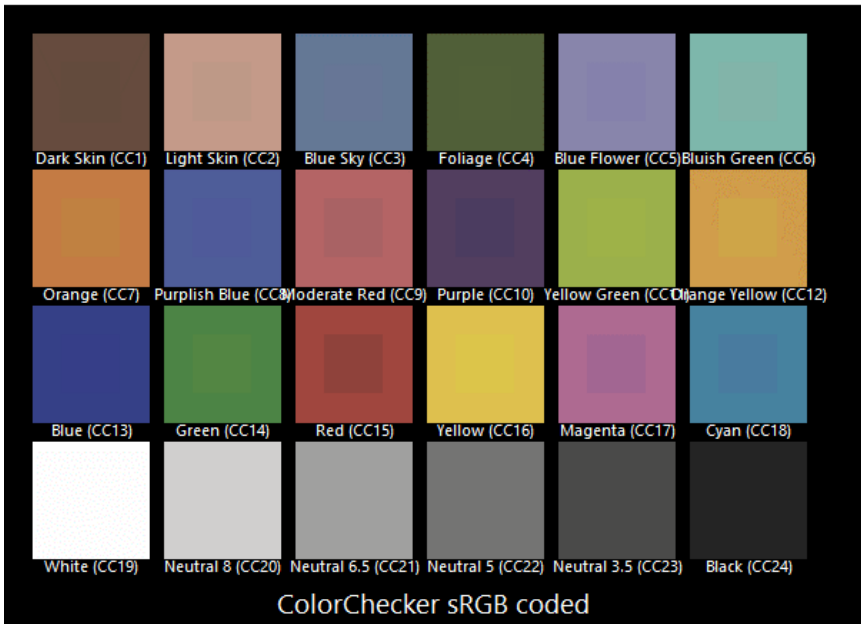
CIE 13.3-1995
(CRI)
R_a 75
R_g -17

Colors are for visual orientation purposes only.

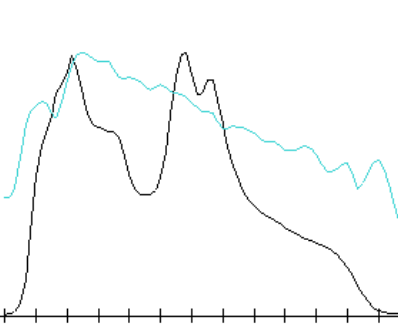
TLCI-2012: WHITE

Direct spectrum input : CCT = D6844 (-0.1)

TLCI-2012 : 49 (D6844)



Sector	Lightness	Chroma	Hue
R	++++	+++	0
R/Y	0	0	----
Y	-	-	----
Y/G	0	-	0
G	-	0	++
G/C	0	+	+
C	+	+++	0
C/B	+++	0	----
B	0	-	---
B/M	+	-	+
M	+++	0	++++
M/R	++++	0	+++++



TM-30: CTO

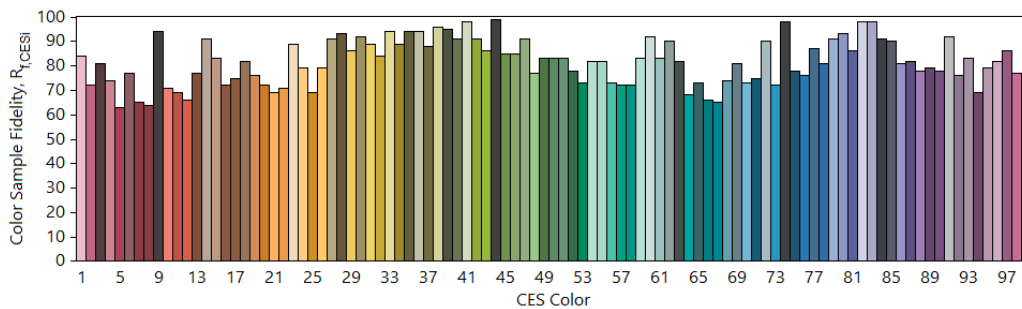
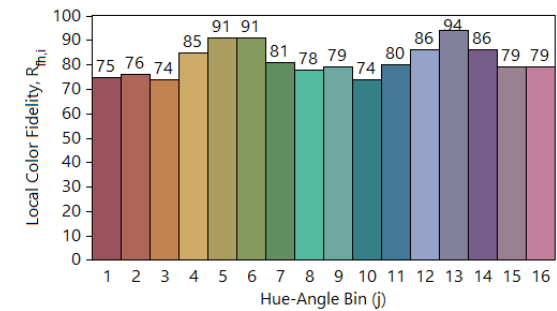
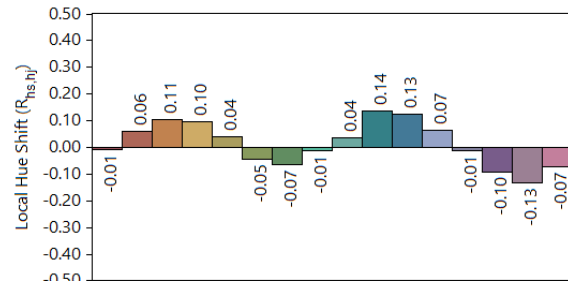
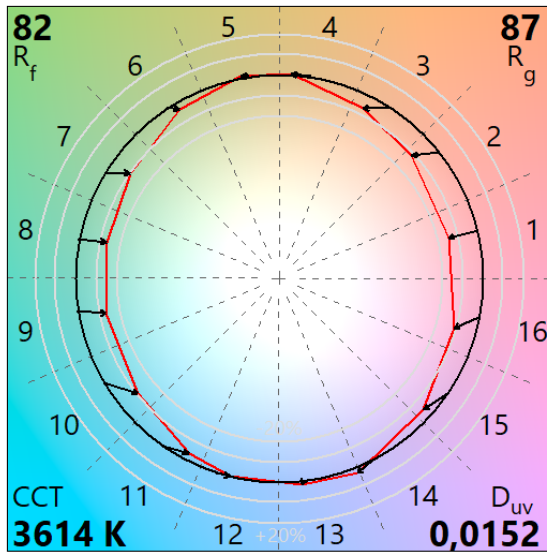
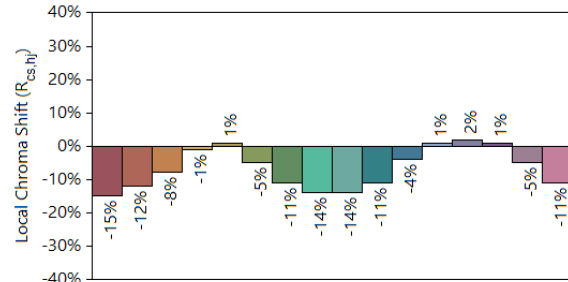
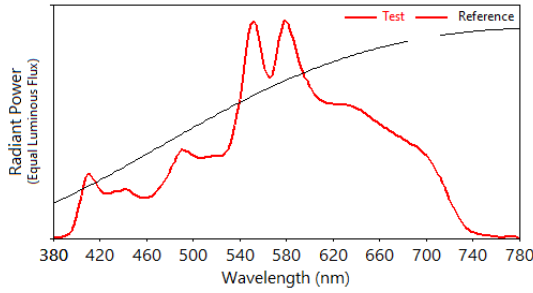
IES TM-30-18 Color Rendition Report

Source: ULTIMO HYBRID

Manufacturer: CLAY PAKY

Date: 21.11.2024

Model: ULTIMO HYBRID



Notes: CTO

x 0,4148
y 0,4324
u' 0,2254
v' 0,5288

CIE 13.3-1995
(CRI)
Ra 72
Rg -10

Colors are for visual orientation purposes only.

TLCI-2012: CTO

Direct spectrum input : CCT = M3614 (+2.8)

TLCI-2012 : 62 (M3614)



Sector	Lightness	Chroma	Hue
R	++++	++	0
R/Y	0	+	---
Y	-	0	---
Y/G	0	0	0
G	-	+	+
G/C	0	++	0
C	0	+++	---
C/B	+++	-	-----
B	+	0	-
B/M	++	0	++
M	+++	0	+++
M/R	++++	+	+++

